



LOFT – STEEL SOLUTIONS
FOR YOUR HOME

DISCOVER

THE UNIQUE ROBUSTNESS OF STEEL!



Give your home not only an aesthetically pleasing look but also unparalleled durability with our innovative steel structures that combine elegance with exceptional strength.

They are the ideal choice for industrial, minimalist but also Scandinavian-style interiors. They blend perfectly with finishes such as structured plaster, decorative concrete, brick or raw wood. Steel windows provide plenty of natural light, creating a practical living space.

Our range includes windows for internal and external use. Steel profiles are easy to maintain and maintain, are not subject to discolouration and at the same time perfectly stabilise the entire structure. They also provide good thermal and acoustic insulation, not inferior to PVC or aluminium profiles.



Profiles made of 100% steel are particularly durable and environmentally friendly, as they are completely recyclable.

presto XS

Extremely slim profiles for doors and fixed glazing - from 23mm front width.

The slim profiles allow intricate designs to be constructed, creating an elegant, timeless look, while the high transparency of the glass elements ensures that plenty of light is let into the interior, creating a sense of spaciousness and comfort.

Available with a minimum front width from 23mm, the profiles allow the creation of modern designs that will also fit well into protected historic buildings.

SYSTEM FEATURES

- Installation depth: 50 mm
- System without thermal break, for internal installation.
- Face width of casement with frame: from 45 mm, fixed glazing from 23 mm
- Glazing beads in various sizes
- Perfectly matching accessories
- Any RAL colour

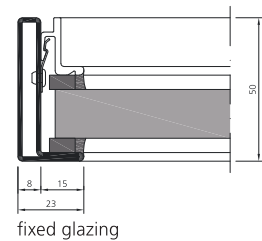
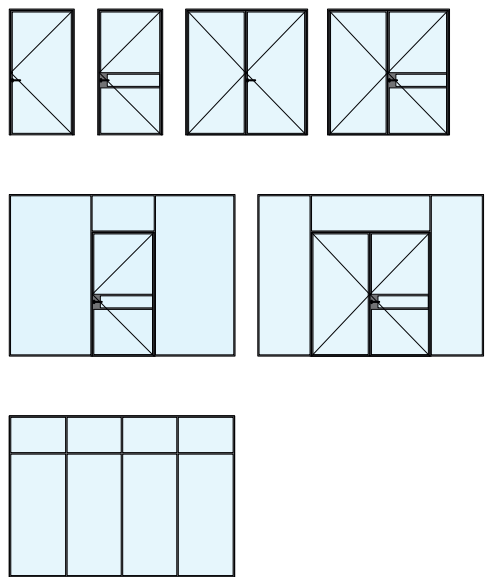
DIMENSIONS

- Sash height: up to 2400 mm
- Sash width: 400-1200 mm
- Max. height of fixed glazing: 3000 mm

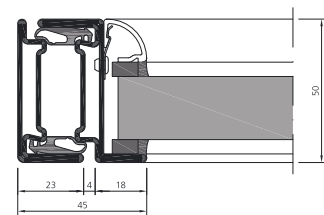


CAPACITIES

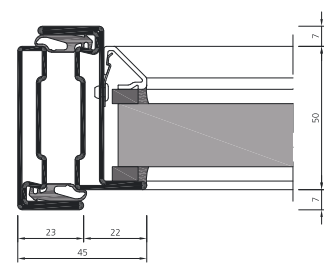
STRUCTURAL CHARACTERISTICS



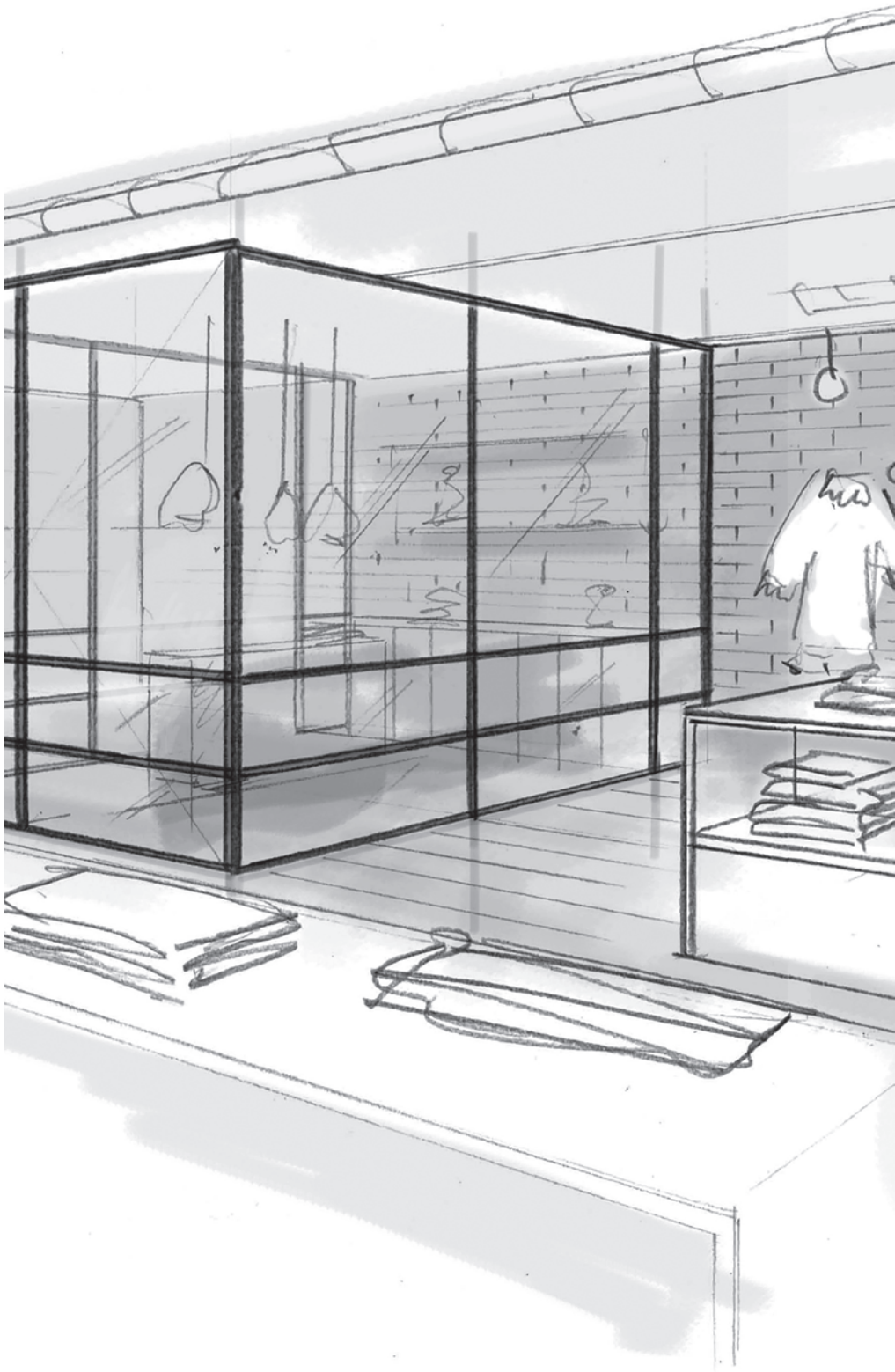
fixed glazing



flush-mounted door

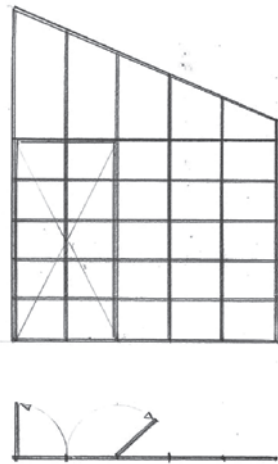
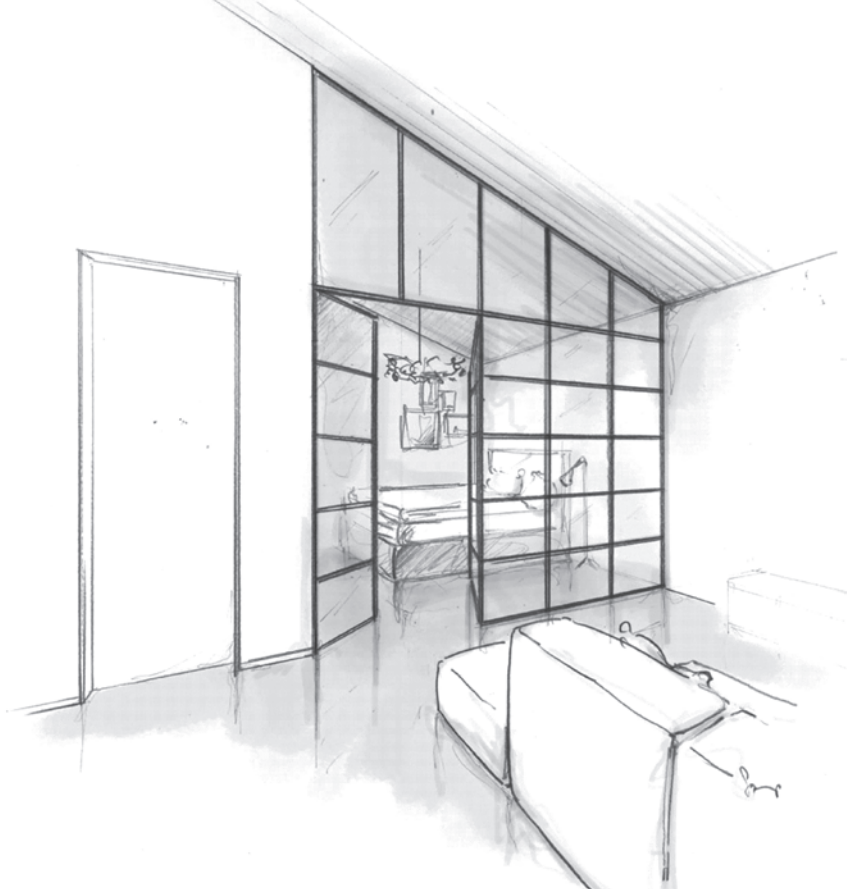
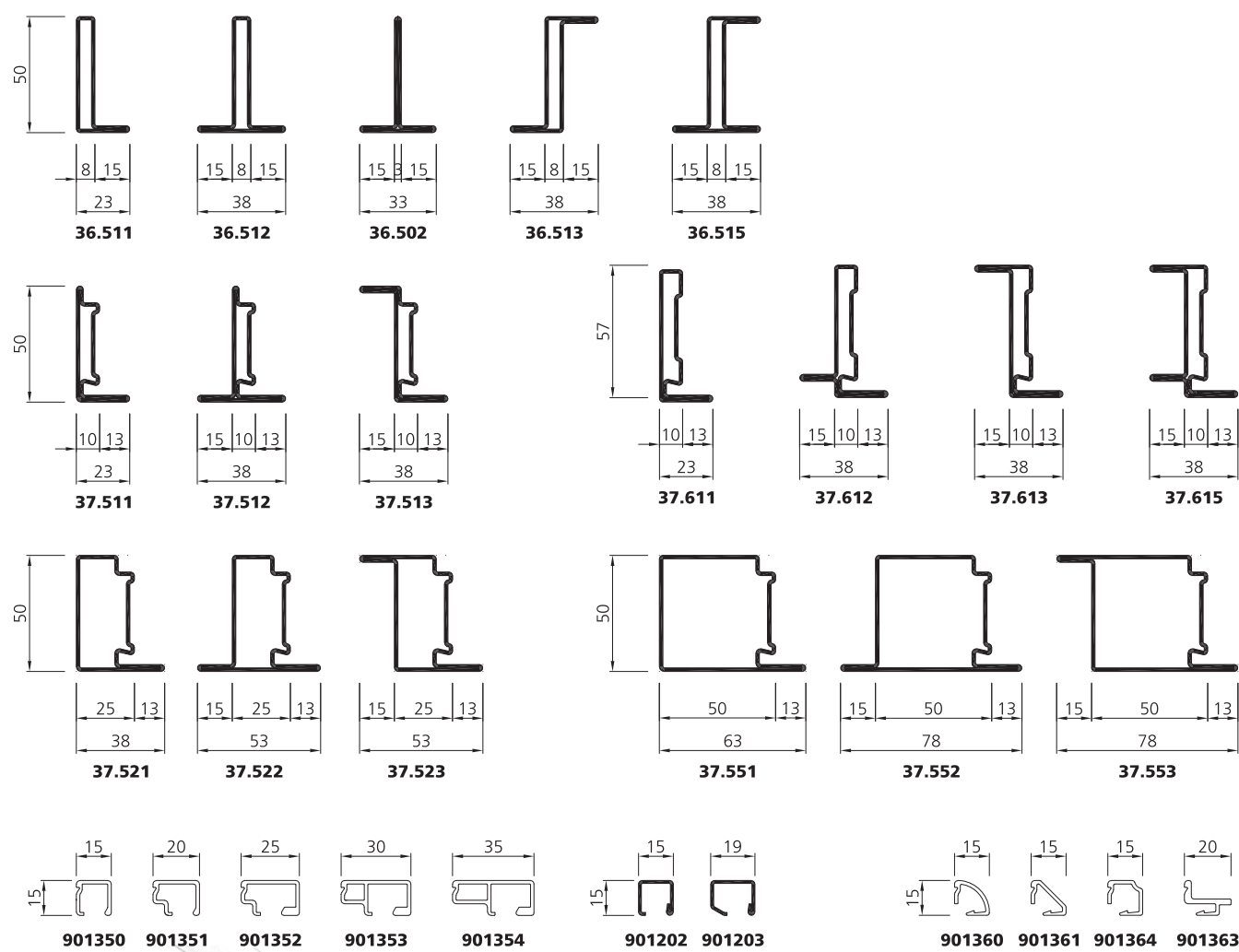


offset door





PROFILES OVERVIEW



unico XS



Unico xs is a system of thermally insulated steel windows and doors with ultra-narrow profiles, which offers many possible applications. The system has many opening variants. It can accommodate infills up to 60 mm deep for the best possible thermal insulation performance.

The unique design of the 100% steel profiles is ideal for the renovation of old or protected historic buildings as well as for modern constructions.

unico XS door

Single-sash and double-sash doors in the Unico XS system are characterised by extremely slim frame profiles. They combine high design quality with excellent insulation performance and sound insulation of up to 46 dB.

Thanks to their flexible profiles, they are suitable both for modernisation in accordance with the requirements of historic buildings and for modern, high-quality buildings.

The highly thermally insulated door profile is made entirely of steel. As a result, the system offers maximum design freedom, from the choice of geometry to the combination with different glazing bars. The result is creative possibilities for both aesthetic solutions and optimum energy efficiency.

BENEFITS

- Extremely narrow profiles
 - High thermal insulation
 - Exceptional design freedom for the building façade
-





TECHNICAL SPECIFICATIONS

- Material: zinc-magnesium steel
- Door sash with frame from 65 mm, fixed glazing from 23 mm

DIMENSIONS:

- Max. sash dimensions for a single- sash door 1200×2400 mm
- Max. double- sash door dimensions: 1200×2400 mm / per sash
- Max. sash weight 160 kg

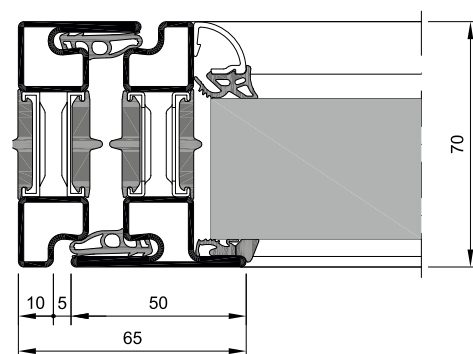
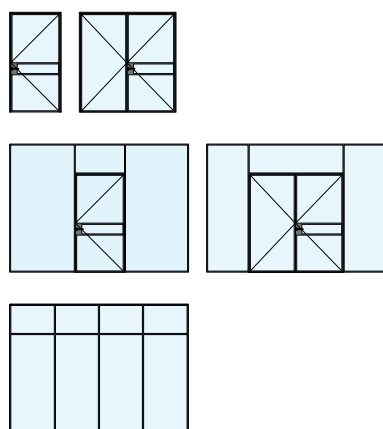
CONSTRUCTION VARIANTS:

- Swing door, single/double sash, with optional sidepanel and fanlight, fixed glazing
- Insulated door threshold
- Construction depth 70 mm
- Max. filling element thickness 42 mm
- Glazing beads in various sizes

PERFORMANCE CHARACTERISTICS*

- CE/UKCA marking in accordance with EN 14351-1
- UD thermal insulation up to 1.3 W/(m²K)
- Wind load resistance: class B2/C2 according to EN 12210
- Air permeability: Class 3 according to EN 12207
- Operating forces: Class 3 according to EN 12217
- Sound insulation up to $R_w = 46$ dB in accordance with EN ISO 140-3

**Take note of the country-specific approvals and requirements*



Door leaf frame

unico XS windows

The Unico XS system is made of 100% steel. The numerous versions, ranging from outward-opening windows to inward-opening, tilt, tilt-turn and fixed glazing, provide exceptional flexibility.

The very elegant yet robust system allows sashes of up to 1440x2440 mm to be constructed in the case of casement windows.

The advantages of the flexible profiles can be fully exploited in both new buildings and listed industrial buildings. The result is rooms filled with natural light with a unique character.

BENEFITS

- Extremely narrow profiles
- Exceptional freedom in the design of the building facade



TECHNICAL SPECIFICATIONS

WINDOWS OPENING INWARDS

- Material variants: Bright steel, Zinc-magnesium steel
- Frame widths: Window sash and sash overlay from 55 mm, fixed glazing from 23 mm

DIMENSIONS

- Max. sash width: 1440 mm
- Max. sash height: 2440 mm
- Max. height of fixed glazing: 3000 mm

FITTINGS - CONCEALED

- Max. sash weight 100 kg

DESIGN VARIANTS

- Tilt or turn windows, single or double-hung, with optional side or fanlight
- Fixed glazing
- Construction depth: sash profile 88 mm, frame profile 70 mm, max. filling depth 60 mm
- Glazing beads in various dimensions

PERFORMANCE CHARACTERISTICS*

- CE/UKCA acc. to EN 14351-1
- Thermal insulation: UW value up to 0.8 W/(m²K)
- Mechanical load: Class 2 in accordance with EN 12400 (10,000 cycles EN 1191)
- Burglar resistance: RC2 according to EN 1627
- Wind load resistance: Class B5/C5 in accordance with EN 12210
- Watertightness: Class E1050 according to EN 12208
- Air permeability: Class 4 according to EN 12207
- Impact resistance: Class 4 according to EN 13049
- Force pressure: Class 2 in accordance with EN 13115
- Sound insulation up to $R_w = 47$ dB in accordance with EN ISO 140-3

WINDOWS OPENING OUTWARDS

- Material variants: Bright steel, Zinc-magnesium steel
- Frame widths: window sash with frame from 110 mm, fixed glazing from 50 mm

DIMENSIONS

TOP HUNG WINDOWS

- Max. sash width: 2378 mm
- Max. sash height: 2378 mm
- Max. surface area: 1,85 m²

TURN-ONLY WINDOWS

- Max. sash width: 778 mm
- Max. sash height: 1528 mm
- Max. height of fixed glazing: 3000 mm

FITTINGS - CONCEALED

- Max. sash weight 180 kg

DESIGN VARIANTS

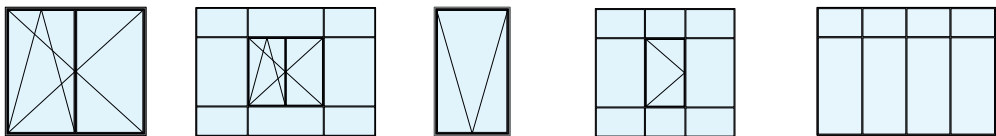
- Single leaf, with optional sidelight and fanlight
- Fixed glazing
- Construction depth: sash profile 70 mm, frame profile 70 mm, max. filling depth 42 mm
- Glazing beads in various dimensions

PERFORMANCE CHARACTERISTICS*

- CE/UKCA acc. to EN 14351-1
- Thermal insulation: U_f value up to 1.2 W/(m²K)
- Wind load resistance: Class B4/C4 in accordance with EN 12210
- Watertightness: Class E1350 according to EN 12208
- Air permeability: Class 4 according to EN 12207
- Force pressure: Class 2 in accordance with EN 13115
- Sound insulation up to $R_w = 34$ dB in accordance with EN ISO 140-3

**Take note of the country-specific approvals and requirements*

DESIGN POSSIBILITIES





We work with passion!



www.awilux.com

This folder is for advertising purposes only and does not constitute an offer within the meaning of Article 66, paragraph 1 of the Civil Code. Product images and drawings shown may differ from those actually offered. Awilux Polska Sp. z o.o. Sp. K. reserves the right to make changes to the product offer at any time. Any reference to the graphics or descriptions shown in this brochure for the purpose of selling products is made at the sole responsibility of the entity making the sale.

Photo: Awilux Sp. z o.o. Sp. K., Forster