



MASTERWIN  
MASTERWIN PLUS  
MASTERSLIM

# Why are aluminum windows a good choice?



DURABILITY



HIGH INSULATION



DESIGN POSSIBILITIES



SUSTAINABLE GROWTH



VARIETY OF COLOURS



VERSATILITY



SAFETY



GOOD INVESTMENT

## What distinguishes the **MasterWin** system?

### **HIDDEN HINGES**

It's all about the details for a good look, hidden hinges are the ultimate finishing touch.

### **SAFETY BARRIERS**

Integrated glass safety barriers can be used for balcony windows, which will allow more light into the room, and at the same time the window will be secure.

### **GLASS CORNER**

Possibility to connect two glass panes without obscuring the view.

### **VERSATILITY**

A full range of frames and sashes as well as additional profiles allows for combination with other systems, which gives almost unlimited design possibilities.







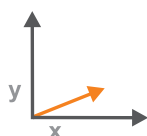
## MasterWin

MasterWin aluminum windows mean optimal functionality, perfect construction, safety and energy efficiency. Their design offers countless possibilities. Following the latest trends in architecture, the system allows the maximum use of daylight.

Thanks to three levels of insulation, the MasterWin system can be used in energy-efficient and even passive (HI+) buildings.

### ADVANTAGES:

- wide application possibilities,
- installation depth 77 mm,
- glazing - frame up to 62 mm, sash up to 72 mm,
- maximum sash dimensions - width: 1700 mm or height: 2800 mm,
- the possibility of using anti-burglary solutions up to the RC2 class;
- Sobinco multi-point locking fittings in black as standard,
- the possibility of using an integrated safety barrier,
- a wide range of system aluminum window sills,
- excellent parameters of thermal insulation,
- a wide range of available colors from the RAL palette, structural and wood-like varnishes, anodized. It is also possible to order two-color windows (bicolor),
- competitive price-quality ratio.



Installation depth 77 mm



Glazing package  $U_g=0,5$



$U_w=0,92^*$   
 $U_S=0,16^{**}$



Fittings Sobinco

\*for reference window 1230x1480 mm

\*\*Uw-Value is based on the ISO/Passive House thermal performance rating program. BTU/hr-ft<sup>2</sup>-F

## AVAILABLE OPTIONS:



RENAISSANCE



DECO



FUNCTIONAL



HIDDEN VENT





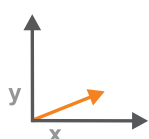


## MasterWin Plus

It is a window system intended for low-energy buildings. It was designed in accordance with the applicable regulations trends in energy efficiency, maximum access of natural light, and the highest safety parameters. The system is passive house certified. When you choose MasterWin Plus, you choose a pioneering window system that meets current and future standards.

### ADVANTAGES:

- wide application possibilities (available variants: Functional, Renaissance, Deco, Hidden Vent),
- installation depth 97 mm,
- glazing - frame up to 78 mm, sash up to 88 mm,
- maximum sash dimensions - width: 1700 mm or height: 2800 mm,
- possibility of using anti-burglary solutions up to the RC2 class,
- Sobinco multi-point locking fittings in black as standard,
- possibility of using an integrated railing,
- a wide range of aluminum system window sills,
- excellent parameters of thermal insulation,
- high stability even in extreme weather conditions,
- innovative concept with excellent thermal insulation at the passive house level,
- a wide range of available colors from the RAL palette, structural and wood-like varnishes, anodized. It is also possible to order two-color windows (bicolor).



Installation depth 97 mm



Glazing package  $U_g=0,5$



$U_w=0,75^*$   
 $U_S=0,13^{**}$



Fittings Sobinco

\*for reference window 1230x1480 mm

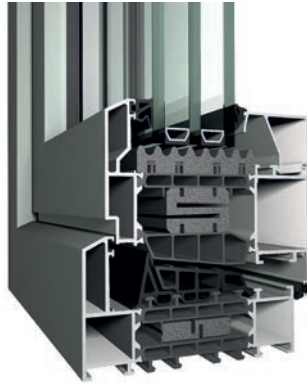
\*\*Uw-Value is based on the ISO/Passive House thermal performance rating program. BTU/hr-ft<sup>2</sup>-°F

# MasterWin Plus

## AVAILABLE OPTIONS:



RENAISSANCE



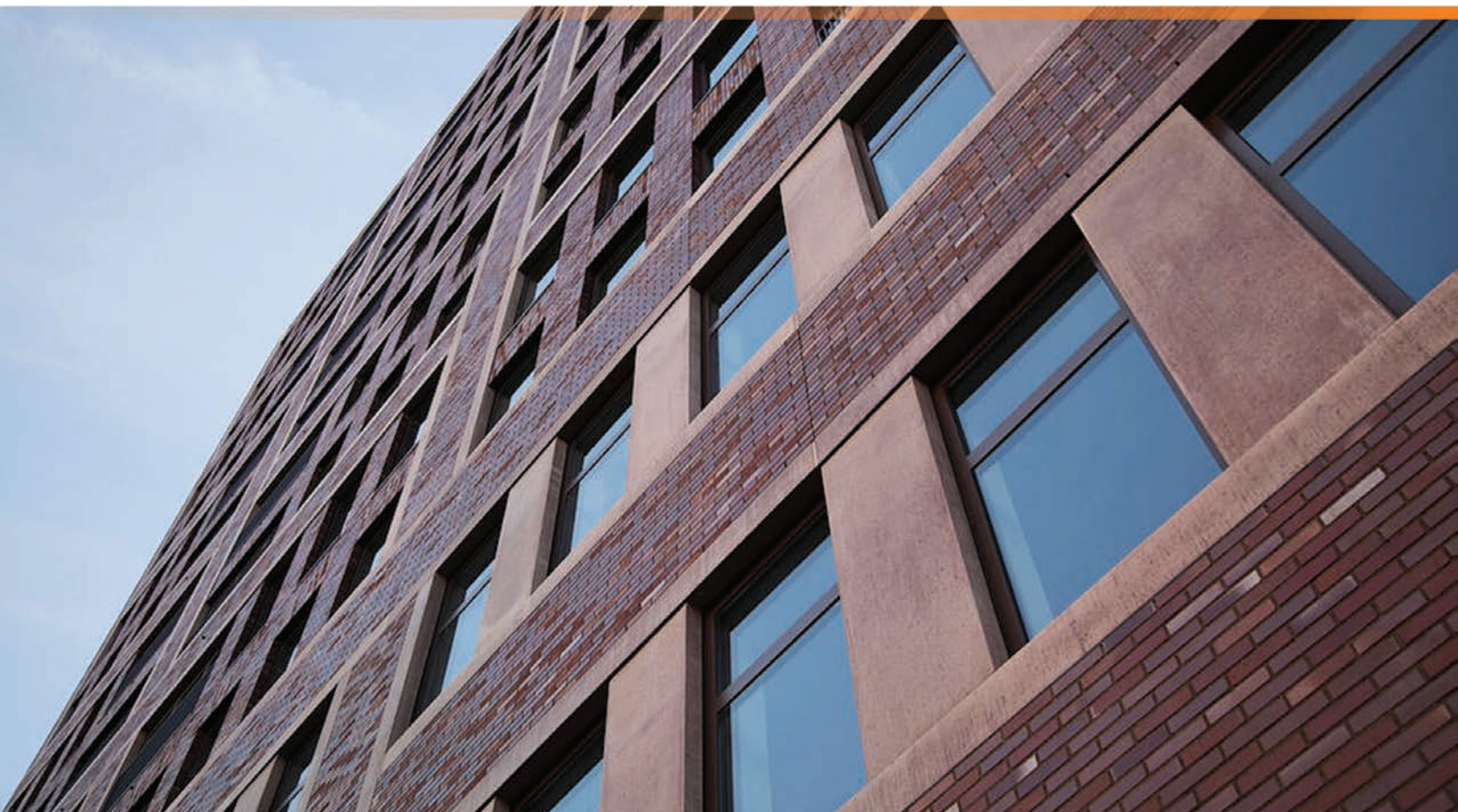
DECO



FUNCTIONAL



HIDDEN VENT





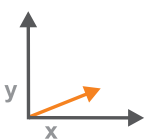


## MasterSlim

MasterSlim is distinguished by a minimalist design and very narrow profiles, while maintaining good thermal insulation parameters. Its appearance resembles narrow profiles of steel frames. It is a system perfectly suited for renovation, as it allows to maintain the original appearance of facades, but it will also work well in new construction projects.

### ADVANTAGES:

- ultralight multi-chamber system,
- construction depth: 75.9 mm
- glazing - frame and sash up to 46 mm,
- maximum leaf dimensions - width: 1700 mm or height: 2800 mm,
- high resistance to weather conditions,
- also available in a high insulation (HI) version for all construction variants,
- the possibility of using anti-burglary solutions up to the RC2 class,
- Sobinco multi-point locking fittings in black as standard,



Installation depth 75.9 mm



Glazing package  $U_g=1.1$



$U_w=1.5^*$   
 $U_S=0.26^*$



Fittings Sobinco

\*for reference window 1230x1480 mm

\*\*Uw-Value is based on the ISO/Passive House thermal performance rating program. BTU/hr-ft<sup>2</sup>-°F

## COMPARISON OF SYSTEMS

	MasterWin	MasterWin Plus	MasterSlim
	FUNCTIONAL		CUBIC
<b>INSTALLATION DEPTH</b>	77 mm	97 mm	75,9 mm
<b>ENERGY</b>			
Thermal insulation - Uf	1,2 W/m <sup>2</sup> K	0,9 W/m <sup>2</sup> K	1,9 W/m <sup>2</sup> K
Thermal insulation - Uw	0,81 W/m <sup>2</sup> K	0,76 W/m <sup>2</sup> K	1,4 W/m <sup>2</sup> K
<b>COMFORT</b>			
Air tightness max. test pressure	4 (600 Pa)		
Water tightness	E900 (900 Pa)		9A (600 Pa)
Design pressure	C3 (1200 Pa)		
<b>SAFETY</b>	RC2		
<b>DIMENSIONS</b>			
Minimal sash dimensions	460 x 685 mm		
Maximal sash dimensions	1700 x 2800 mm		
Maximal sash weight	170 kg		
Maximal glazing package in the frame	62 mm	78 mm	46 mm
Maximal glazing package in the sash	72 mm	88 mm	46 mm

